

22
22
AW

AUTUMN
WINTER

FASHION
INFORMATIONS



Swept by a desire to gather up **ENERGIES**, pull **TOGETHER** ideas and cultures, Autumn Winter 2223 is a surging call to **TIGHTEN OUR TIES**, to combine know-hows and expertise, all while favoring **DIVERSIFICATION**.

Collaborations are stepped up, generating **CO-CREATIONS**, all in a spirit of **CONNECTION**, synergistic enrichment and close cooperation.

Ecological imperatives demand a transformed approach to product development. Both global and specialized, these transformations move the fashion industry closer to a **CIRCULAR ECONOMY**, where **ECO-DESIGNS** are a springboard to powerful aesthetics.

A constantly evolving **DIGITAL FLUENCY** paves the way to new possibilities - for **ALTERNATIVE** ways to streamline, invent and produce.

A digital language that fosters more focused, original and forward-looking approaches.

Designs are conceived to **TARGET** with **PRECISION**, for fashion nurtured by **PLURAL** identities. The endlessly shifting bridges between style universes and uses are multiplying, anticipating a life-style spawning new interactions between intimate and showy, indoor and outdoor, well-being and well-fitting.

A season that calls for straightforward solutions, wearability, easy or bold shapes. Solutions **BUILT** from **POWERFUL** materials with **STRONG** sustainable, visual and tactile added-values.



© Amélie Bigard

22
23
A W
AUTUMN
WINTER



Discover our full decoding of the season's trend on our TREND TASTING SEASON replay

22
22
AW
Colors

AUTUMN
WINTER

The Autumn Winter 22-23 color range confidently reaffirms color's energy and power. Bright pulses and contrasting rhythms throb, like a pulsating heart entwined with a subdued luminosity infused with absorbed pigments.

Colors trigger a longing for proactive expression. They invite us to explore combinations that shine a light on the beauty of materials, and magnify the singularity of each savoir-faire and expertise.

PRECIOUS WARMS spring from the richness of a fertile earth, offering up a wealth of nourishing nuances. The shine of soft metal, the glossiness of fur and a velvety fleshiness magnifies color surfaces.

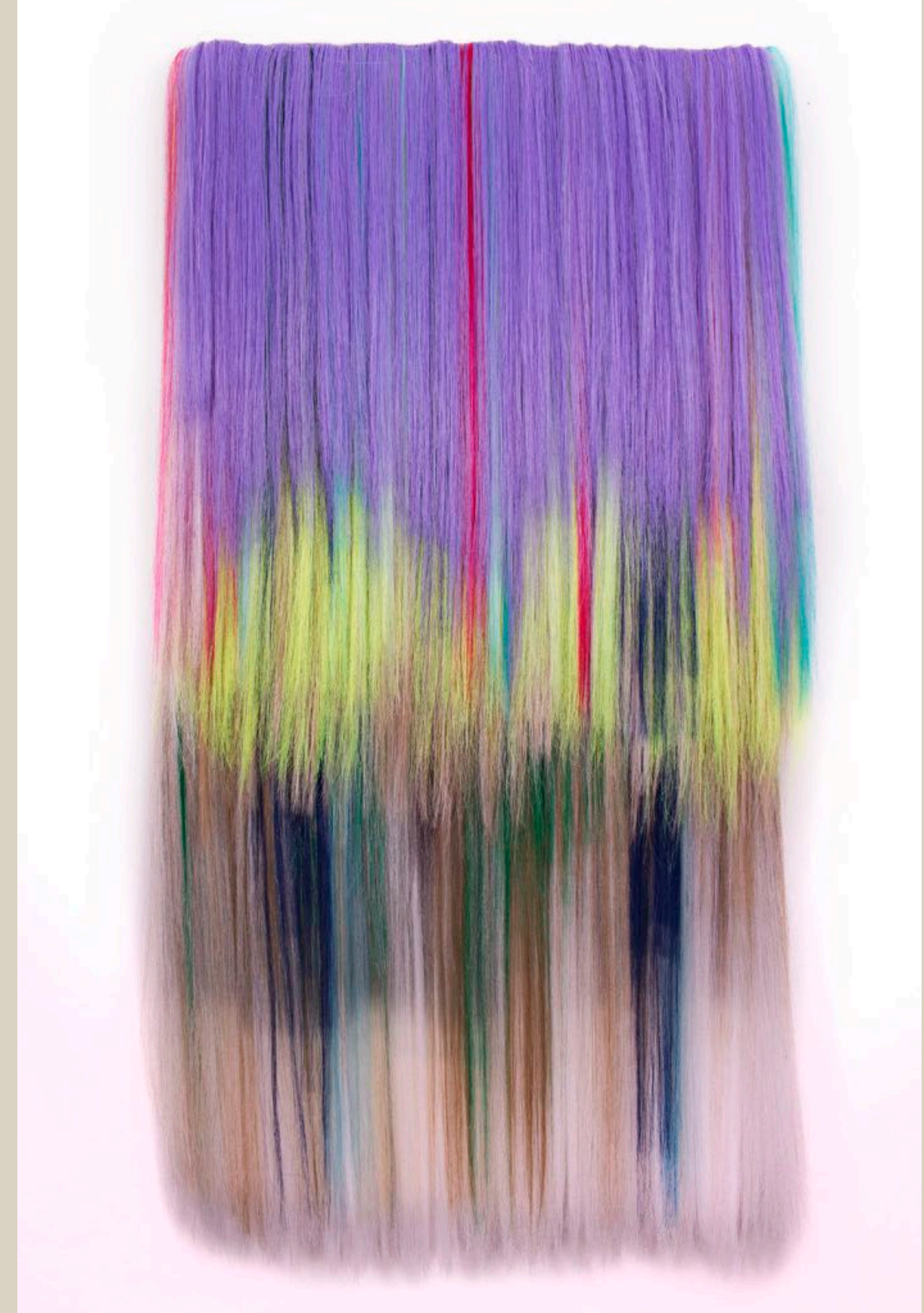
FORTIFYING BRIGHTS lend a jolt of positive spontaneity to new-generation primary shades, to dare dynamic and glamorous combinations. Graphite and an ecru shade ramp-up the vibrancy of these chromatic and graphic clashes.

MYSTERIOUS SHADOWS lit by an artificial or lunar luminescence lend a new intensity to light versus darkness. Pale hues are tinged, while darks are warmed by deep brownish shades and heady purplish tones, to re-envision black/white contrasts.

SMOKY AND PIGMENTED, faded, taupey shades, worked in tone-on-tone harmonies. Soothed and ever so slightly colorful nuances are played in monotonal variations, with mid-tones treated as conciliatory greys.

The season's palette delicately balances energetic intensity and familiar shades.

Colors open new gateways between one season and another, one universe and another, one creative field and another.



5. Ginger gem

Orange

9. Cardio orange

22
22
A W
Colors

AUTUMN
WINTER

Colorful shadows

22
22
Colors

AUTUMN
WINTER

AW

Colorful strength

22 AUTUMN WINTER
22 AW
Colors

PV Color range

Inspirational contents

27 exclusive colors
digital and physical

key color combinations
and trends

for Fabrics, Leather, Prints,
Accessories

Available on:

www.premierevision.com

Full decoding on
COLOR TREND
TASTING
replay



22
23
AW
AUTUMN
WINTER

Products highlights

- Ecoresponsibility
- Everlasting richness
- Free Hybrids
- Powerful fantasy

22 AUTUMN
23 WINTER
AW



The ecoresponsible highlights



22
AUTUMN
WINTER
23
AW

The ecoresponsible highlights

Veritable artisans of modernity, spinners, weavers, tanners and accessory component manufacturers are revisiting their tool kits to offer optimal sustainability.

Innovation used to focus on the raw materials; now the desire to transform creations into virtuous versions is applied to the entire product life cycle.

Today, eco-responsibility is present across the whole range. Each stage in the production process is examined in detail to find the solutions with the lowest impact; those that allow the design of clothing and accessories in line with both environmental and style requirements. Circularity, economising on resources, water and energy, non-toxic processes, biodegradability – eco-ingenuity is on the menu for winter 2022-2023.

22 AUTUMN
WINTER
2AW

Focusing on
supreme naturality

NGS Malhas (PT)



22 AUTUMN
WINTER
2AW

Focusing on
supreme naturality

Marini (IT)

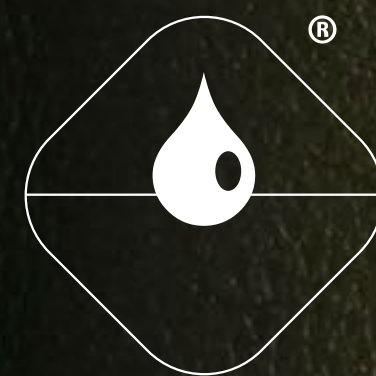


22
23
2
AW

AUTUMN
WINTER

Getting off to a good start

Curtidos Castaner (SP)



22 AUTUMN
WINTER
2AW

Getting off to
a good start

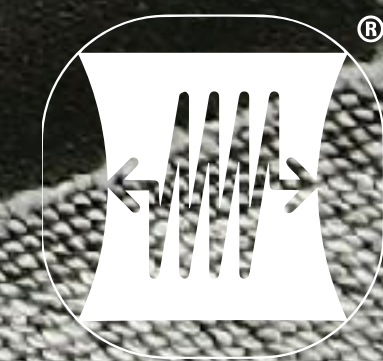
TOSCO CO.LTD. (JP)



22
22
AW
AUTUMN
WINTER

Multiplying the recycled

Tessuti & Tessuti (IT)



22
A W
AUTUMN
WINTER

Multiplying the recycled

Stylen - Zen Kiwami (JP)



22 AUTUMN WINTER
2AW

Multiplying the recycled



Varcotex (IT)



Compagnie Française du Bouton (FR)



Bottonificio Piemontese (IT)



2022
AUTUMN
WINTER
AW

Sparkle
responsibly



Hurel (FR)



22
AUTUMN
WINTER
2AW

Sparkle
responsibly



Ckd Cetinkaya (TR)



22 AUTUMN
22 WINTER
AW

Sparkle
responsibly



Valter (IT)



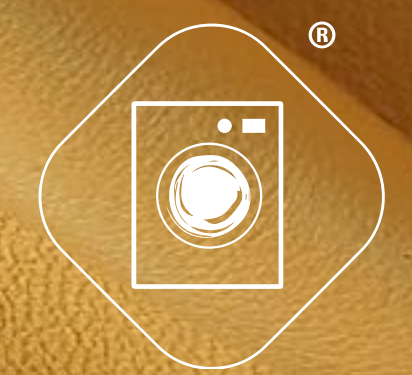
Moltec (BR)



22 AUTUMN
23 WINTER
AW

Accomplish
incredible feats

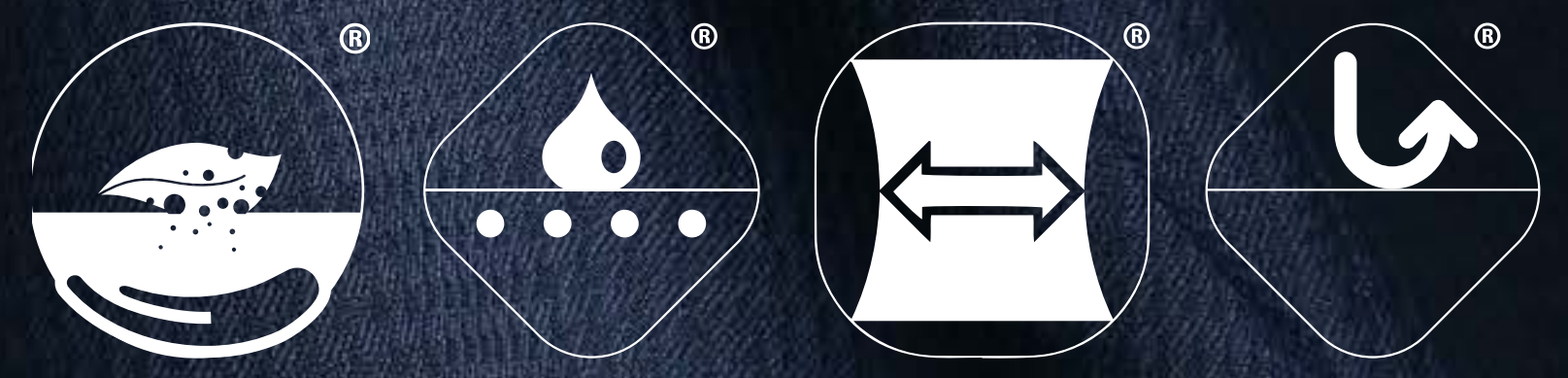
Tanneries Pechdo (FR)



22 AUTUMN
22 WINTER
AW

Accomplish
incredible feats

Manifatture Italiane Scudieri - Mectex (IT)



22 AUTUMN
23 WINTER
AW



Everlasting richness



22
AUTUMN
WINTER
23
AW

Everlasting richness

The autumn-winter 22-23 season showcases the invisible properties of product developments – from the quality of the materials to the sensory appeal of the handles, from technical performance features to sustainable innovations.

A full exploration of the beauty of materials and expert know-hows, with extensively-researched compositions and creative constructions boosted by an eco-design approach, for sustainably original fashions.

The goal is to meet the challenges of eco-responsibility, sensing suppleness, roundness, elasticity, and cultivating invisible performances.

And what if true strength lies in things invisible to the naked eye?

22
23
AW
AUTUMN
WINTER



Essential opulence

Luxury Fabrics (UK)

22 AUTUMN
22 WINTER
AW

Essential
opulence



Lanificio Luigi Ricceri (IT)



22
AUTUMN
WINTER
23
AW

Nourished
nuanced



Hofstetter Pelz & Design (DE)



22
22
AW
AUTUMN
WINTER

Meticulously
elaborate

Manutrans (FR)

22 AUTUMN
WINTER
2AW

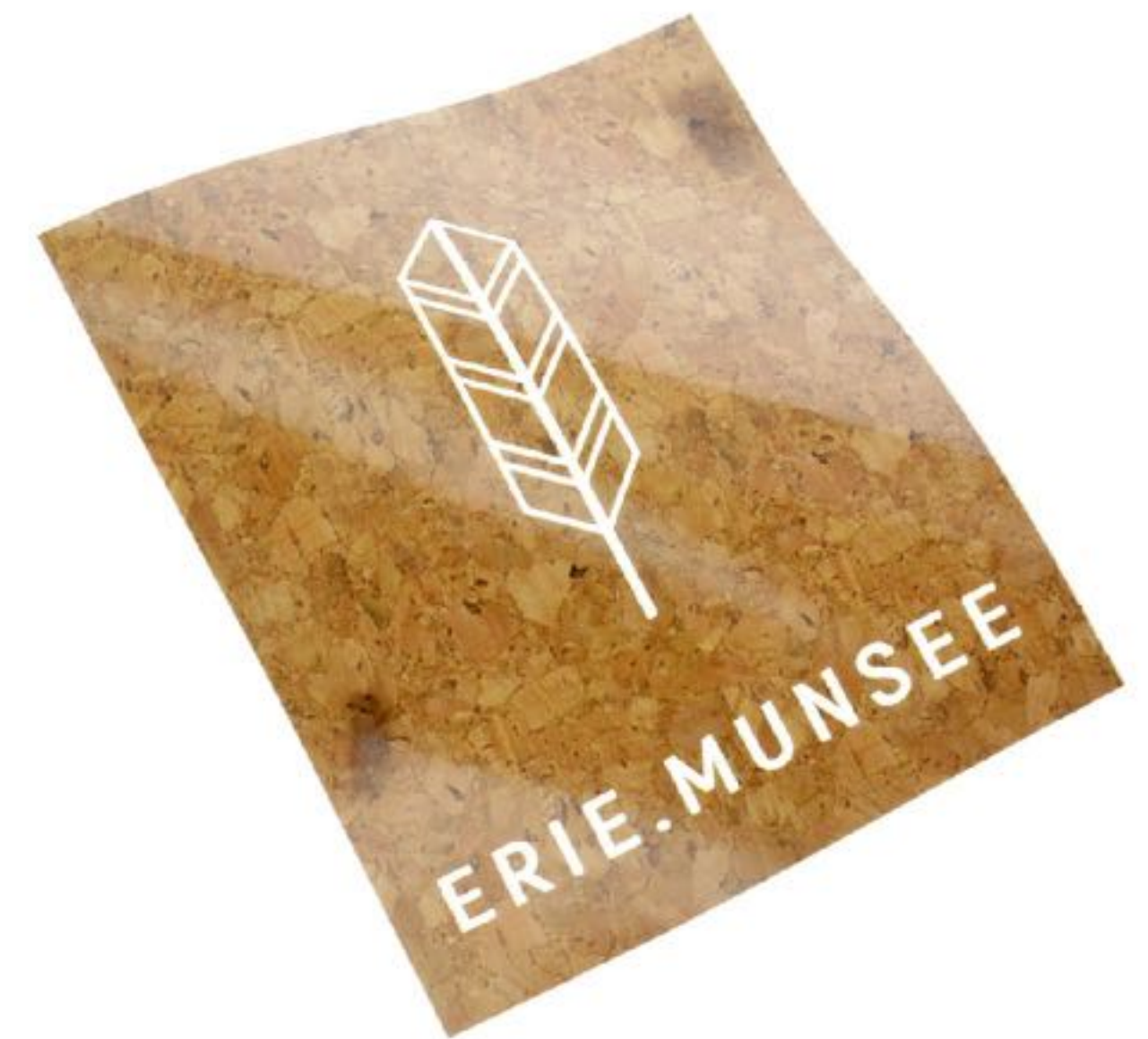
Sumptuous
authenticity



Passamaneria Italiana (IT)



Boutons Kocher (FR)



Nilorn Belgium (BE)

22
23
A W
AUTUMN
WINTER

Architected allure

Mitsubishi Chemical Corporation (JP)





22
23
23
AW
AUTUMN
WINTER

Architected allure

Telatex (FR)



22
22
AW
AUTUMN
WINTER



Velvet concrete

Tannerie Remy Carriat (FR)

22
AUTUMN
WINTER
2AW
Sharp



TMM (TU)

22
22
AW

AUTUMN
WINTER

Essential
opulence



Velcorex Since 1828 (FR)





22
23
2
AW

AUTUMN
WINTER

Cozy
by design

Joaps - Malhas (PT)

22
23
AW

AUTUMN
WINTER

Enveloping

Dani Spa (IT)

22 AUTUMN
23 WINTER
AW



Free hybrids

22 AUTUMN
WINTER
2AW
Free
Hybrids

Hybridized know-hows

A response to intersecting style universes and mixed uses.

The bridges between style universes and uses are constantly changing, multiplying and adapting to various lifestyles, fluctuating from an emphasis on well-being to easy comfort, indoor to outdoor, boldly extroverted to intimate.

There's a blurring of the boundaries between formal and informal, with increasingly sophisticated casual wear, and dressier looks moving towards a more contemporary ease.

22
22
AW
AUTUMN
WINTER



Tailoring Over shirt weight

Lanificio Morganti (IT)



22
22
AW
AUTUMN
WINTER



Shirting Jacket weight

Somelos Tecidos (PT)





22
23
A W
AUTUMN
WINTER

Shirting New compositions

Suncorona Oda (JP)





22 AUTUMN
WINTER
2AW

Silkies Flowing shines

Mitsubishi Chemical Corporation (JP)



22 AUTUMN
22 WINTER
AW

Leather impressions

Cuir Du Futur (FR)



22
22
AW

AUTUMN
WINTER

Leather impressions

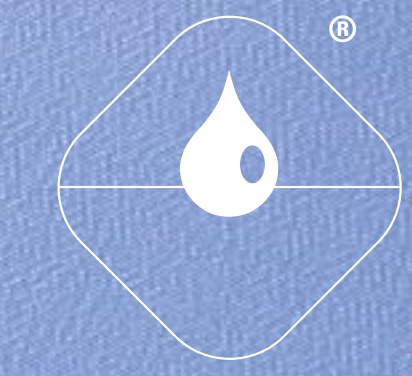


Selina Leather (TR)

22 AUTUMN
22 WINTER
AW

Sport & tech Alter couture

Balas Textile (FR)



22
23
A W
AUTUMN
WINTER

Sport & tech
Offbeat jacquards



Serates (IT)



22 AUTUMN
22 WINTER
AW

Silkies Stretchy fluidity

Les Tissages Perrin (FR)



22 AUTUMN
WINTER
2AW

Trompe l'œil effects : Mimetism



Myzip (IT)



Gruppo Uniesse (IT)



Dorlet (FR)

22 AUTUMN
23 WINTER
AW

Powerful fantasy



22
AUTUMN
WINTER
2AW

Powerful fantasy

The Autumn Winter 22-23 dives into the world of fantasy with bold creations, surprising aesthetic proposals, and subtle, lively or mysterious colorways. A voyage of discovery through decorative know-hows in the light of unique graphic expressions.

Daring to sparkle like a shiny star,
giving a quiver to sequins,
or simply sprinkling precious bits of metal.
Bringing that indispensable touch of extravagance
to captivate with color.
Giving your instincts free reign,
offsetting animal designs with eloquent pictorial effects,
judiciously flirting with bad taste,
to develop grating, clever and
enticing contrasts!
Pushing tactile effects to a joyful exuberance,
geometrics to an irresistible excess,
and celebrating the sumptuousness of flowers!

22
23
2
AW
Golden
power

AUTUMN
WINTER



Meltam Tekstil (TR)



22
A W
AUTUMN
WINTER

Golden
power



Ruffo Coli Tessuti (IT)

22
23
AW

AUTUMN
WINTER

Golden power



Dimar Conceria (IT)



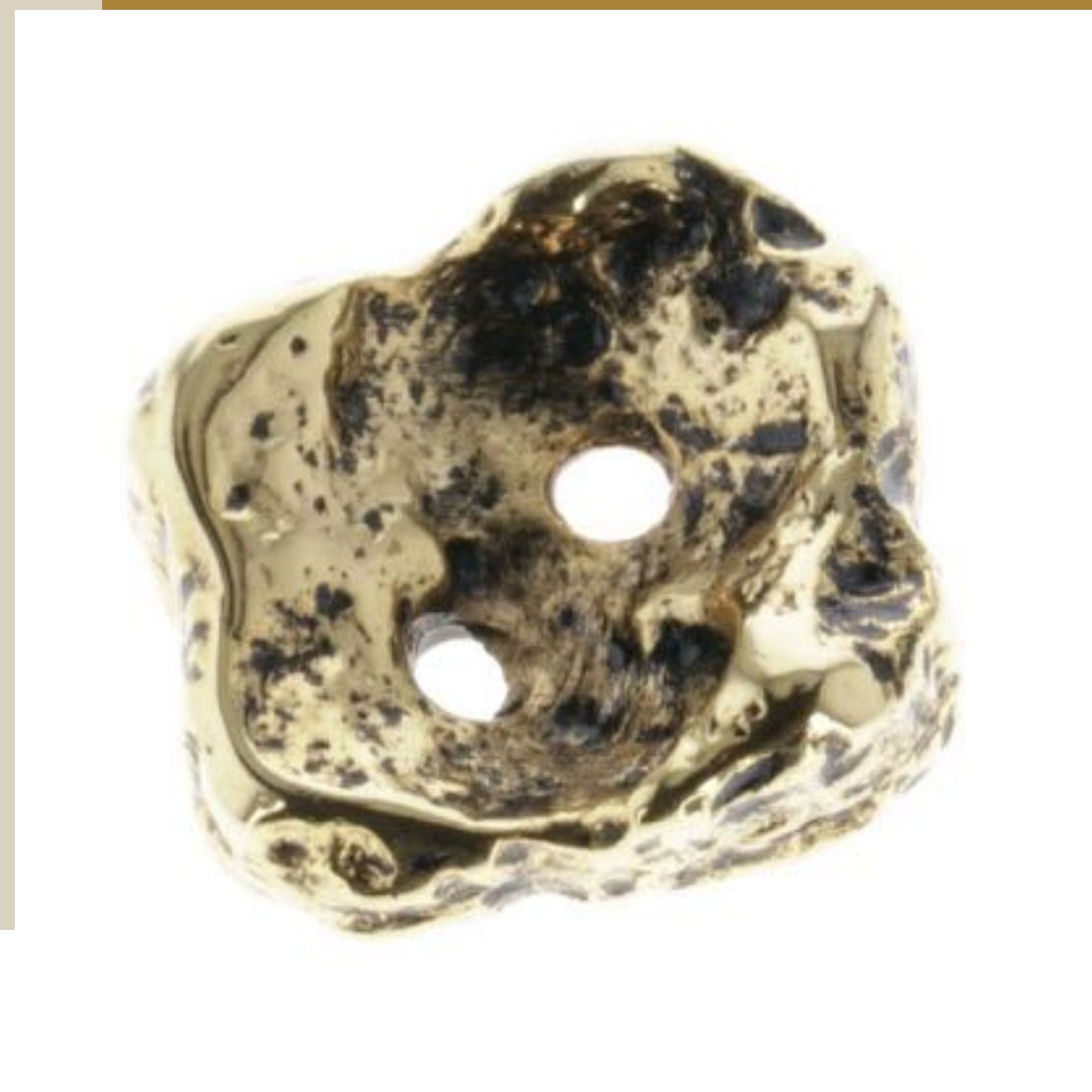
22 AUTUMN WINTER
2AW
Golden power



Piñatex By Ananas Anam (UK)



22 AUTUMN WINTER
22 AW
Golden power



Moda-Pierre (FR)



Société Choletaise de Fabrication (FR)



M.M.C. Di Colombo Angelo Fabio & C. SNC (IT)

22
22
AW

AUTUMN
WINTER



Compulsively
expressive

Ventures (IN)

22
22
AW

AUTUMN
WINTER



**Compulsively
expressive**

Leathertex Linea Umberto Lenzi (IT)

22
22
AW

AUTUMN
WINTER

Compulsively
expressive



Tissages Denis & Fils (FR)

22
22
AW

AUTUMN
WINTER

Compulsively
expressive



Guigou (FR)

22
22
AW

AUTUMN
WINTER

Compulsively
expressive



Clerici Tessuto & C (IT)

22
22
AW

AUTUMN
WINTER

Compulsively
expressive



Antik Dantel (TR)

22 AUTUMN
WINTER
2AW

Compulsively
expressive

Raynaud (FR)



22 AUTUMN
WINTER
2AW

Compulsively
expressive



Graf and Co (IT)



Les ateliers Tamalet (FR)



BCN Fashion group (SP)



Pirola Passamanerie (IT)

22
22
AW

AUTUMN
WINTER

Raw romance



Beppetex (IT)

22
22
AW

AUTUMN
WINTER

Raw
romance



Redaelli Velluti /Niedieck Div. Of Marzotto Lab (IT)

22
AUTUMN
WINTER
22
AW

Raw
romance



Weft (IT)

22
22
AW

AUTUMN
WINTER

Raw
romance

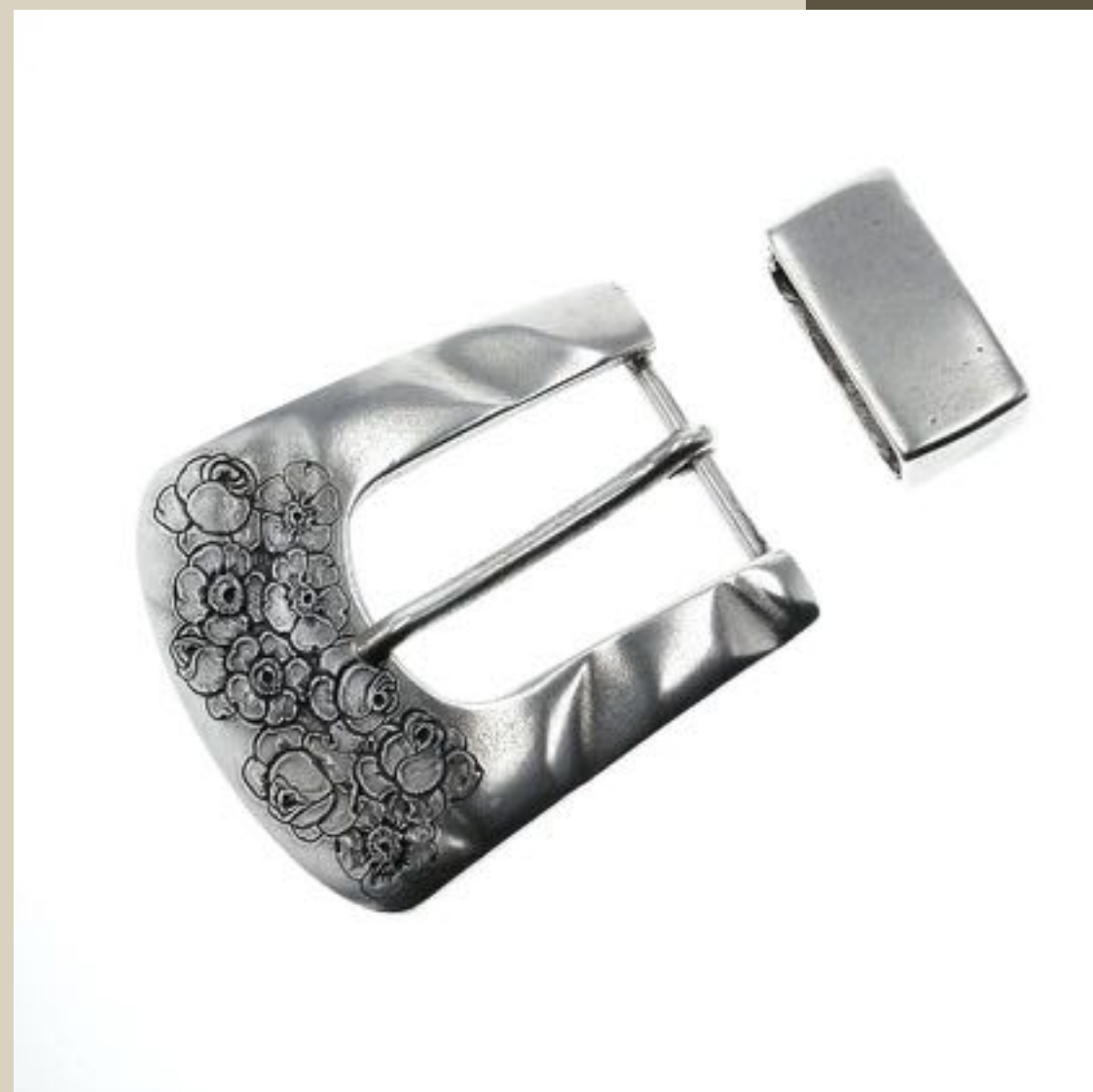


Silkomo (IT)

22 AUTUMN WINTER
2AW
Raw
romance



Bottonificio Lenzi 1955 (IT)



RI-ME di Mauro e Silvia Paoli & C (IT)



OPA (IN)

22
22
AUTUMN
WINTER



3D FORUM

22
23
AW
AUTUMN
WINTER



Discover out new 3D forum thanks to virtual-visit technology
The season's material highlights through more than 100 references selected by the Première Vision fashion team on the Fanciful Flair forum.

By clicking on each product proposed in this virtual space, the visitor will be able to learn about its specificities and qualities, and will be directed to the relevant supplier's online shop on the Première Vision Marketplace.

3D FORUM on
premierevision.com